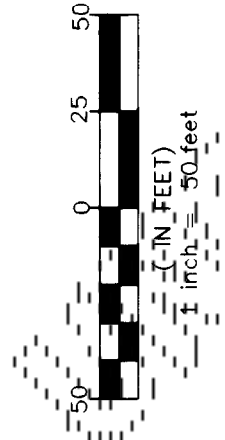
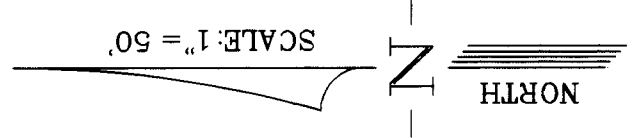
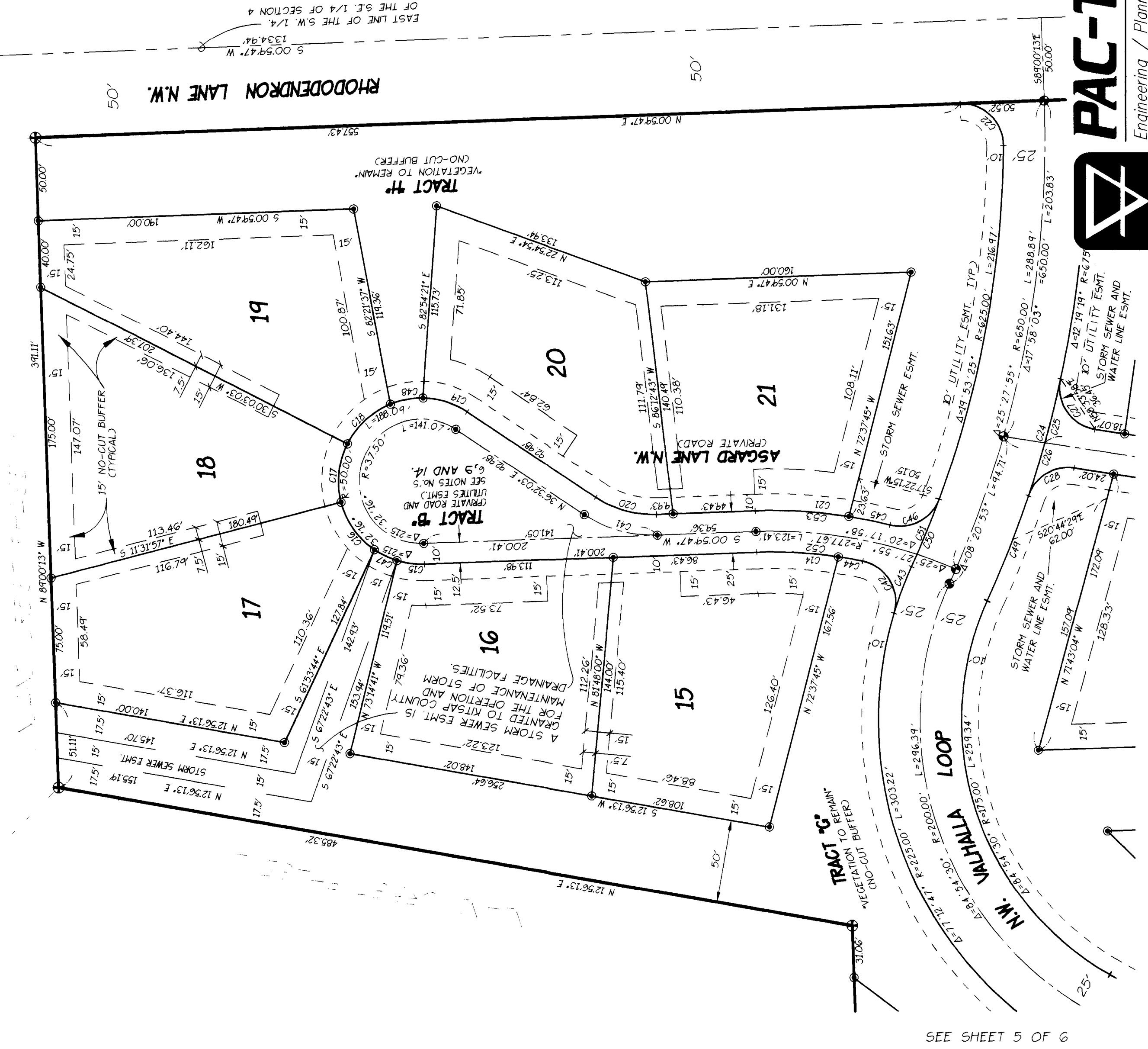
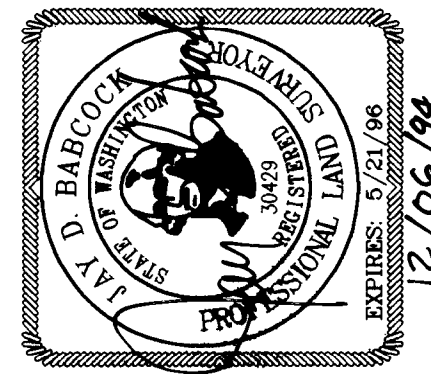


VINLAND CREST PHASE 1
A PORTION OF THE SOUTHWEST QUARTER OF SECTION 4, AND
A PORTION OF THE NORTHWEST QUARTER OF SECTION 9,
TOWNSHIP 26 NORTH, RANGE 1 EAST, WILLAMETTE MERIDIAN, IN KITSAP COUNTY, WASHINGTON

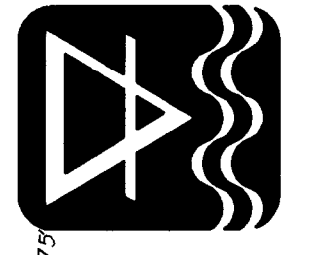


- BASIS OF BEARING:**
ASSUMED
- INSTRUMENT USED:**
LEITZ SET-2 / FIELD TRAVERSE
- LEGEND:**
- SET 5/8" REBAR AND CAP
 - L.S. NO. 30228
 - ⊕ SET 2" IRON PIPE WITH BRASS CAP WITH "X"
 - ⊙ SET BRASS IN-CONCRETE WITH "X"
 - NY NATURAL VEGETATION

SURVEYOR'S NOTES:
1.) SEE SHEET 3 FOR BOUNDARY TIES TO SECTION SUBDIVISION.
2.) SEE SHEET 3 FOR LINE AND CURVE TABLES.



PAC-TECH Engineering, Inc.
Engineering / Planners / Surveyors / Environmental Specialists
Pierce County 473-4491 / King County 243-7112 / Kitsap County 377-2053



SEE SHEET 4 OF 6

SEE SHEET 5 OF 6

9412190068

V/Pg 28 | 203